



GREASE GRABBER

Grease Extraction Filters Installation, Operation and Maintenance Manual

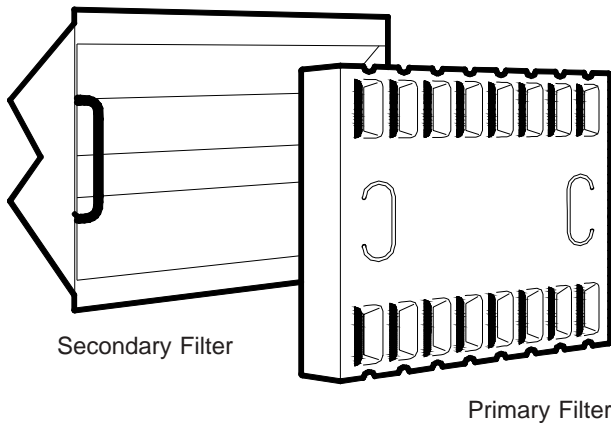


Fig.1 Typical filter arrangement

IMPORTANT !

This manual must be read in full before installation, operation and maintenance of the unit/s supplied

Contents		page
1	Introduction	1
2	Receipt of Goods/Handling	1
3	Setup	1
4	Filter Withdrawal & Replacement	1
5	Maintenance	2

1 Introduction

The **Grease Grabber** series is a range of two-stage grease extraction filters specifically designed for installation in kitchen extract hoods.

For further technical details regarding dimensions and weights contact VES on **08702 404340**, quoting the sales order (SO) number and the unit type as found on the unit label. Further copies of this O&M are available for download, visit www.ves.co.uk.

2 Receipt of Goods / Handling

Immediately upon receipt of goods check for possible damage in transit. In the event of any damage having occurred or if any item is found missing, it is essential to inform VES Andover Ltd. within **7 days** of delivery, quoting sales order (SO) number.

3 Setup

The GREASE GRABBER filter system is designed to fit in kitchen extract hoods. Consideration must be given by the installer to the position of the hood to ensure that access can be provided in line with current Health & Safety and Building Regulations. Consideration must also be given by the installer for adequate illumination of the hood location in order for safe maintenance.

In order to ensure optimal filter performance, it is important that there are no air leaks around the filters, and sets of the same filter are in the same channel. The grease drain channels at the base of the hood should be cleaned daily and should have regularly spaced grease collection pots, which should be in close contact with the hood so that air ingress is kept to a minimum.

4 Filter Removal & Replacement

- Remove the primary filters first, followed by the secondary filters.
- Remove the centre filter first using the handles provided
- Slide the adjacent filter to the centre.
- Remove, and repeat see *fig.2*

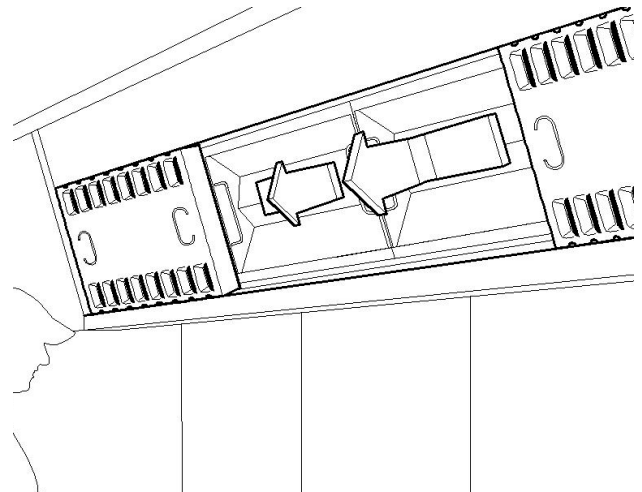


Fig.2 Filter removal detail

Primary Filters

To remove	To replace
lift using handles provided	<ol style="list-style-type: none"> align primary filter with top channel
<ol style="list-style-type: none"> slide up into top channel 	<ol style="list-style-type: none"> slide into top channel
<ol style="list-style-type: none"> withdraw from lower channel first 	<ol style="list-style-type: none"> drop into bottom channel

Fig.3 Primary filter removal and replacement detail

GREASE GRABBER

Grease Extraction Filters Installation, Operation and Maintenance Manual

4 Filter Removal & Replacement

Secondary Filters

Release the hooks holding the secondary filters together; this is achieved by sliding the hooks off the ends of the handles see *fig.4*. Again, slide the filters toward the middle of the canopy, and remove as below. Ensure that the hooks are reattached when filters are replaced.

IMPORTANT !

When removing and replacing the secondary filter take care to avoid damaging the canopy, in particular any fire suppression system that may be incorporated

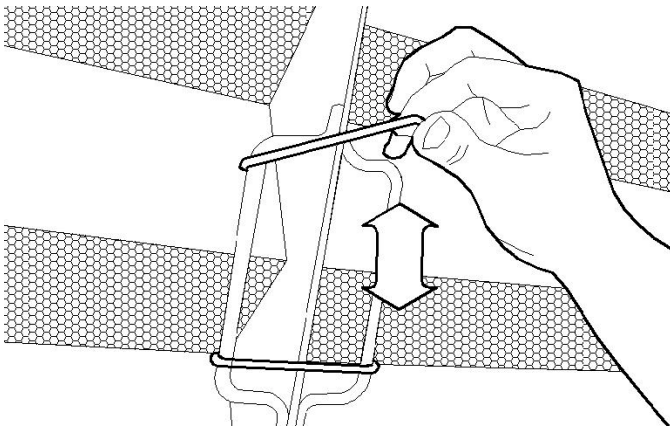


Fig.4 Secondary filter fixing hook release detail

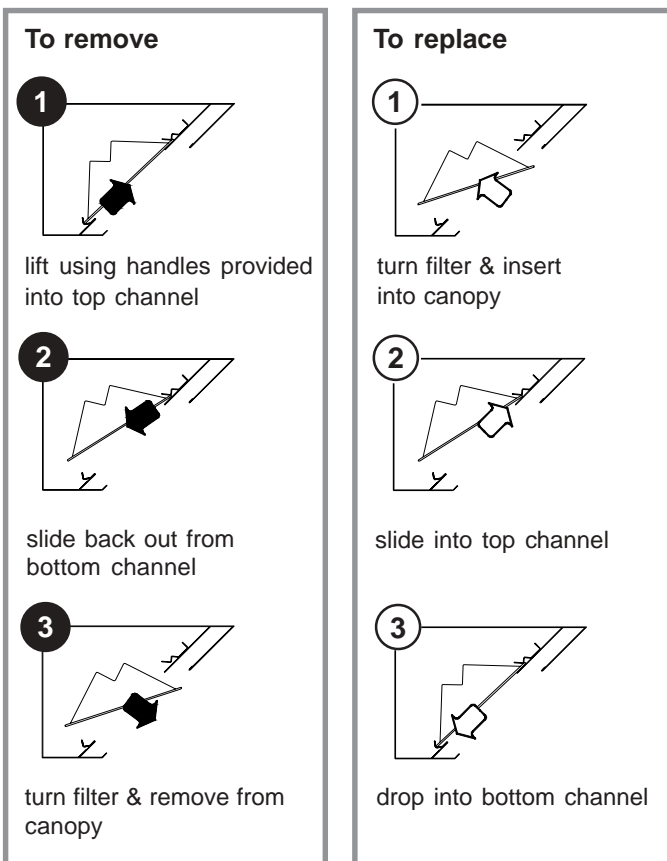


Fig.5 Secondary filter removal and replacement detail

5 Maintenance

IMPORTANT !

Before attempting to carry out any maintenance work, investigative or repair work, the fan in the system must have been turned off and isolated from the supply for at least 2 minutes, and the hood must have been allowed to cool fully.

The frequency of cleaning will depend on the type of cooking and quantity of food cooked.

The following represents the recommended maintenance necessary to keep the system operational.

Failure to do so will reduce system efficiency and may result in damage to the filters.

Daily Maintenance

- Remove the filters from the hood and place each in a whirlpool sink or dishwasher.
- Using standard dishwasher soap, cycle for 10 minutes if using a whirlpool sink, cycle 3 times for a dishwasher.
- It is recommended that filters be washed daily however for canopies with large quantities of filters it is acceptable to wash 3 or 4 filters each day, cycling all filters in 3 days.
- Check the filters and inside the hood for foreign objects, for example rags, and remove where found.
- Where fitted to the system, grease collection cups should be removed, cleaned and correctly replaced, ensuring a good fit to the canopy.

Monthly Check

Visually inspect each filter. If grease build-up is found, soak each filter in hot soapy water for 2 hours prior to washing. After cleaning, hold the secondary filters up to the light and check for holes, visible through the perforated mesh. Any grouping of holes, indicated by light shining through six or more perforations, is a sign of a damaged filter, which will need replacing. Discolouration of the beads in the filter is normal and does not require the replacement of filters.

When enquiring after or ordering spares, contact VES Spares Department, quoting the sales order (SO) number and unit type as found on the unit name plate.

Telephone	08702 40 43 40
Fax	08702 40 45 50



PLEASE ENSURE THAT THIS DOCUMENT IS PASSED ON TO THE END USER.

We reserve the right to alter the specification without notice
©VES Andover Ltd. 2006
No part of this publication may be photocopied or otherwise reproduced without the prior permission in writing of VES Andover Ltd.